

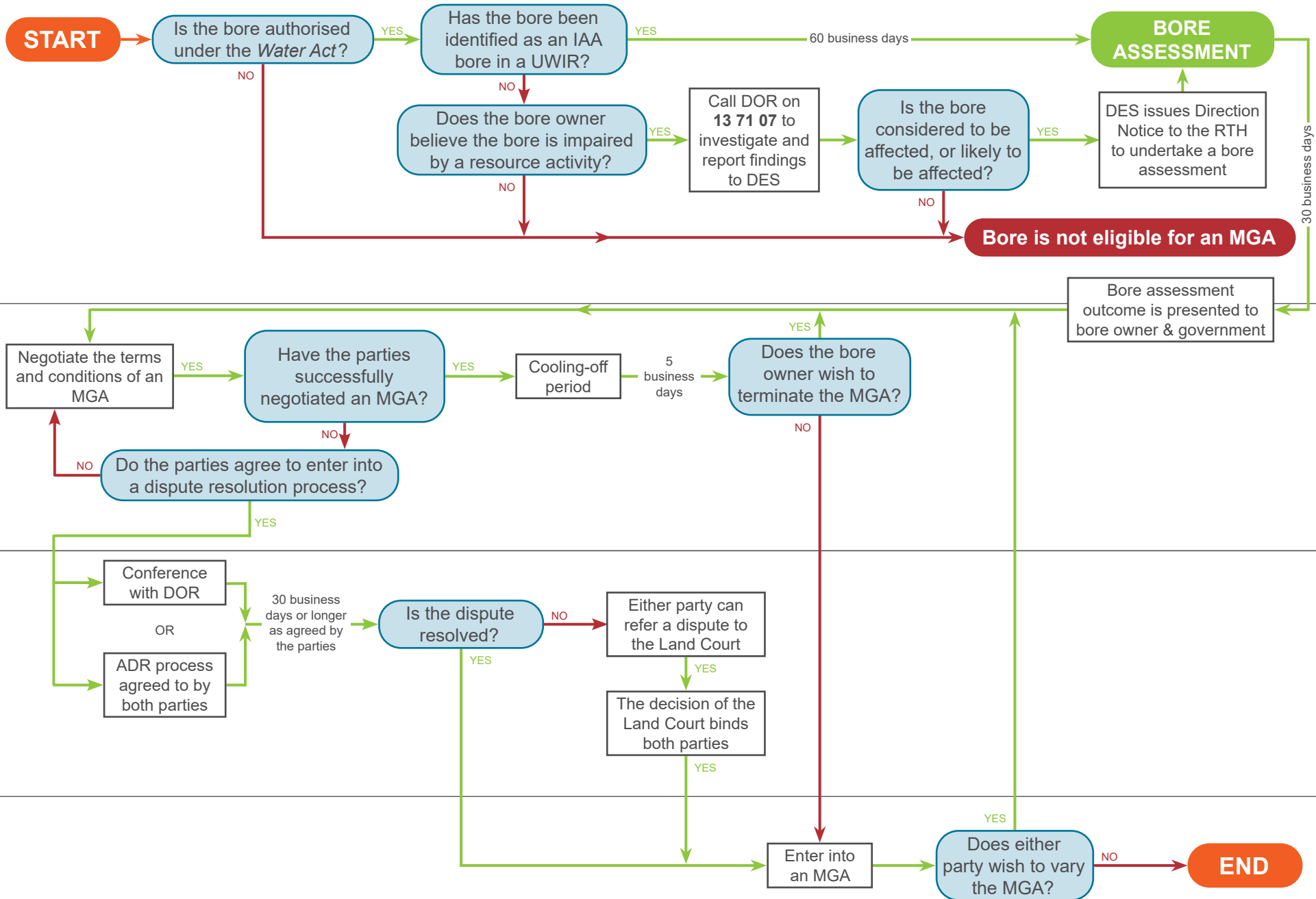
MAKE GOOD AGREEMENT (MGA) PROCESS FLOW CHART

Assessment

Negotiation
aim to reach agreement within 40 business days after bore assessment

Dispute resolution

Agreement



This flow chart outlines the MGA process as per **Subdivision 3 of the Water Act 2000**. Resource companies are required to carry out a bore assessment and enter into an MGA if the bore has been identified as an IAA bore in a UWIR, or DES has issued a direction notice for that bore.

MAKE GOOD AGREEMENT (MGA) PROCESS FLOW CHART

Glossary of terms:

UWIR: [Underground Water Impact Report](#).

IAA: Immediately Affected Area - the area of an aquifer identified in an UWIR within which water levels are predicted to fall, due to water extraction by petroleum and gas tenure holders, by more than the trigger threshold within three years.

IAA bore: A bore that has been identified in an UWIR as being in an Immediately Affected Area.

DOR: Department of Resources.

MGA: Make Good Agreement.

DES: Department of Environment and Science.

ADR: Alternative Dispute Resolution.

RTH: Responsible Tenure Holder.